

FILE COPY

# General Electric Company

Schenectady, N.Y.

NOVEMBER, 1919

BULLETIN No. 54873

## PARTS OF TYPE SB-61-11 FORMS E1, E2, E3, E4, E5 AND E6 LINE BREAKERS

Cat.No.	Description
221422	BOX with dust guards, hinge brackets and catch for cover
196972	Hinge bracket with hinge pin
1406321	Catch for cover
221423	Rivet fastening hinge bracket or catch to box (3/16 in. by 1/4 in. r.h. iron)
50400	Soft rubber bushing for cables
221424	Cover with hinge straps and latch
221425	Hinge strap
205149	Latch for cover
173003	Rivet fastening hinge strap to cover (3/16 in. by 3/8 in. r.h. iron)
221423	Rivet fastening latch to cover (3/16 in. by 1/4 in. r.h. iron)
221426	Support for box
221427	Spacing block between contactor and box
149858	Bolt fastening support, spacing block and relay to box (3/8 in.-16, 2 3/4 in. hex. h. st'd. sherardized)
1480533	Bolt fastening support and spacing block to box (3/8 in.-16, 2 3/8 in. hex.h. st'd. sherardized)
141259	Washer for Nos. 149858, 1480533 (13/32 in. by 3/4 in. by .0625 in. sherardized)
141255	Nut for Nos. 149858, 1480533 (3/8 in.-16, hex. st'd, sherardized)
154197	Spring lock washer for No. 141255 (13/32 in. by 25/32 in. by 3/32 in. thick)
141968	Porcelain bolt insulator, complete, for 1/2 in. supporting bolt. Consists of 2 insulators No. 141971; 2 clamping washers for No. 141973; 4 packing washers No. 141976 and 2 flanged washers No. 141978
141971	Porcelain insulator
141973	Clamping washer, sherardized
141976	Packing washer
141978	Flanged washer, sherardized
1542078	Supporting bolt (1/2 in.-13, 5 1/2 in. sq.h. st'd. sherardized)

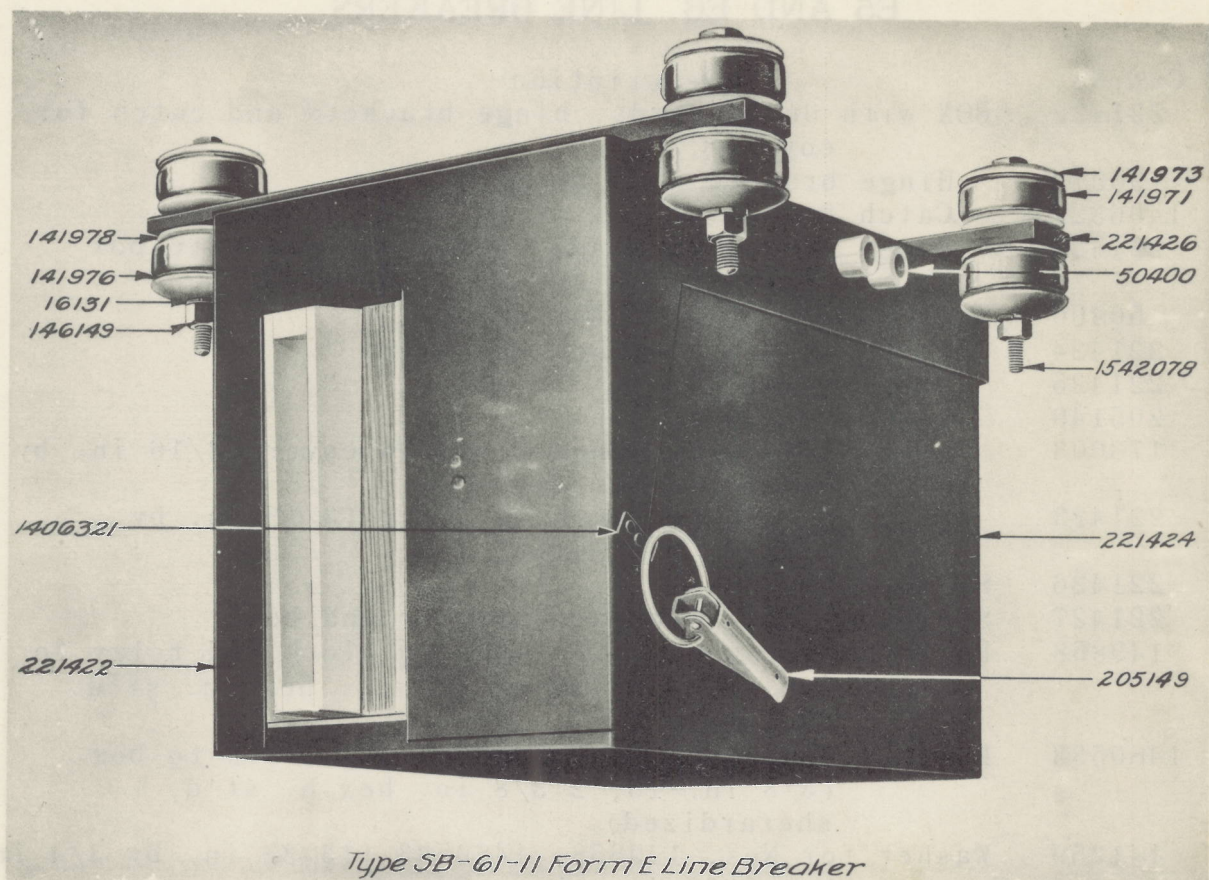
NOTE:-Data subject to change without notice.



54873-2

PARTS OF TYPE SB-61-11 FORMS E1, E2, E3, E4, E5 AND E6  
LINE BREAKERS

Cat.No.	Description
146149	Nut for No. 1542078 (1/2 in.-13, hex. st'd. sherardized)
16131	National lock washer for No. 146149 (13/32 in. by 1 1/32 in. by 1/8 in. thick)



*Type SB-61-11 Form E Line Breaker*

TYPE DB-291 FORM E7 CONTACTOR

221428 TYPE DB-291 FORM E7 CONTACTOR, complete, with support, blowout coil and arc chute

Following are the parts:-

- 201305 Supporting block for contactor
- 165383 Insulation shield between supporting block and blowout coil support
- 174888 Screw fastening insulation shield to supporting block (No. 8, 3/4 in. r.h. sherardized)
- 165359 Insulation shield between blowout and operating coils
- 201310 OPERATING COIL with connection blocks (Spec. F-323352 stamped on coil)

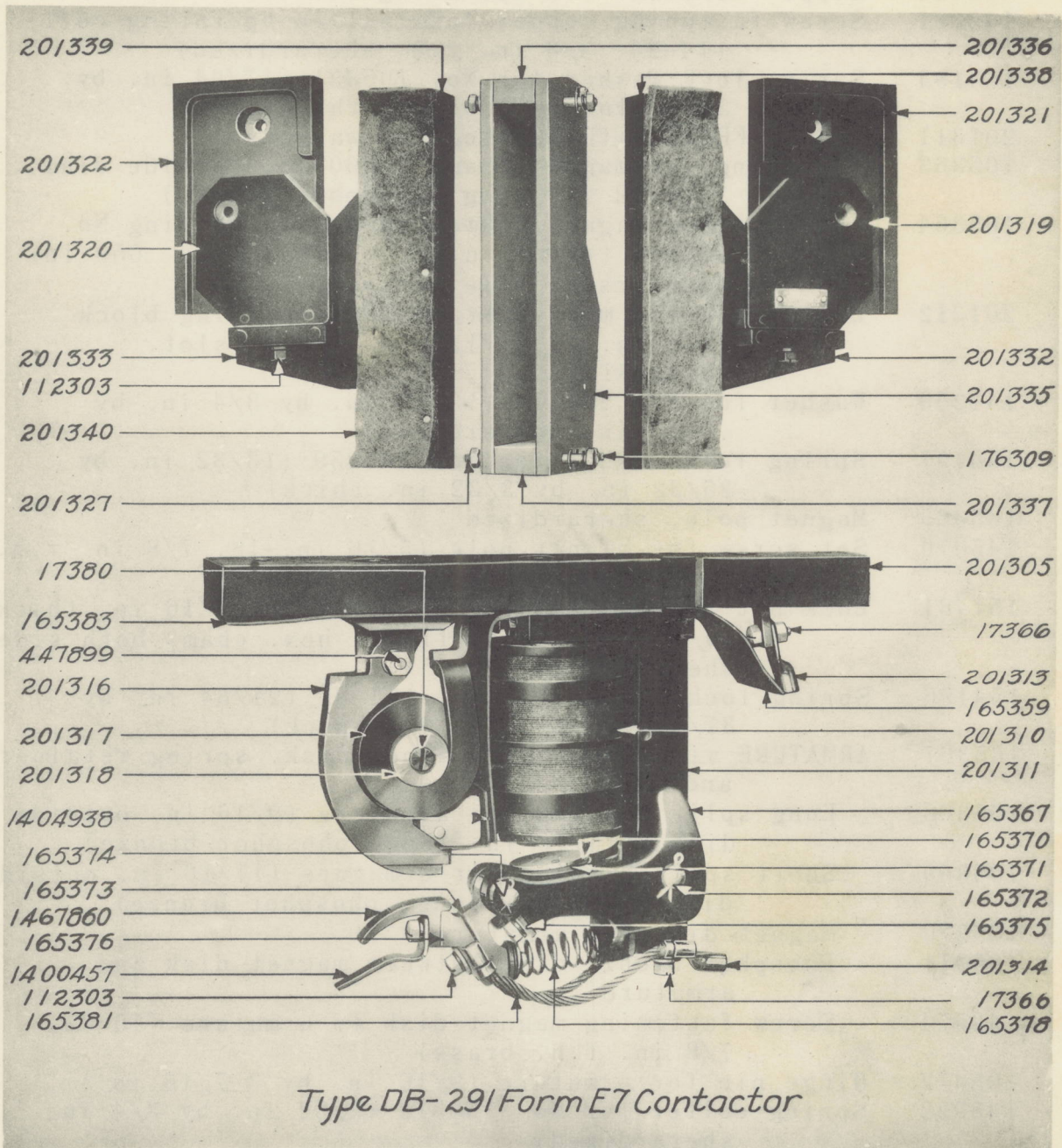


PARTS OF TYPE SB-61-11 FORMS E1, E2, E3, E4, E5 AND E6  
LINE BREAKERS

TYPE DB-291 FORM E7 CONTACTOR

Cat.No.	Description
411512	Copper terminal for operating coil
105331	Screw fastening copper terminal to operating coil (14-24, 3/8 in. r.h. sherardized)
154194	Spring lock washer for No. 105331 (17/64 in. by 29/64 in. by 5/64 in. thick)
201311	MAGNET FRAME with bushing and washers
165363	Bushing for magnet frame (.690 in. outside diam., 1 13/32 in. long, phosphor bronze)
165364	Washer for magnet frame, used with bushing No. 165363 (45/64 in. by 1 3/8 in. by .050 in. countersunk hole, brass)
201312	Bolt fastening magnet frame to supporting block (3/8 in.-16, 1 1/2 in. hex.h. slot. sherardized)
141259	Washer for No. 201312 (13/32 in. by 3/4 in. by .0625 in. sherardized)
154197	Spring lock washer for No. 141259 (13/32 in. by 25/32 in. by 3/32 in. thick)
165365	Magnet pole, sherardized
145670	Set screw for magnet pole (5/16 in.-18, 7/8 in. r.h. sherardized)
151481	Lock nut for No. 145670 (5/16 in.-18, 3/16 in. thick, 19/32 in. across flats, hex. cham. both sides, sherardized)
154196	Spring lock washer for No. 151481 (21/64 in. by 37/64 in. by 5/64 in. thick)
165367	ARMATURE with bushings, magnet disk, spring retainer and stop
165368	Long split bushing for armature (9/16 in. outside diam., 15/16 in. long, phosphor bronze)
165369	Short split bushing for armature (11/16 in. outside diam., 3/4 in. long, phosphor bronze)
165370	Magnet disk for armature
165371	Phosphor bronze disk between magnet disk and armature
42574	Screw fastening magnet disk to armature (10-32, 7/8 in. f.h. brass)
165372	Hinge pin for armature (9/16 in. by 3 7/16 in.)
143522	Spring cotter for No. 165372 (3/32 in. by 3/4 in. sherardized)
165373	OPERATING ARM with bushing and washers
165374	Hinge pin for operating arm (7/16 in. by 3 3/8 in.)
110774	Spring cotter for No. 165374 (3/32 in. by 5/8 in. sherardized)
165375	Stop plate for operating arm, sherardized
17376	Cap screw fastening stop plate to armature (5/16 in. -18, 3/4 in. hex.h. slot. sherardized)







PARTS OF TYPE SB-61-11 FORMS E1, E2, E3, E4, E5 AND E6  
LINE BREAKERS

TYPE DB-291 FORM E7 CONTACTOR

Cat.No.	Description
154196	Spring lock washer for No. 17376 (21/64 in. by 37/64 in. by 5/64 in. thick)
165376	CONTACT ARM with contact and arcing tips
1467860	Contact tip for contact arm
1400457	Arcing tip
17376	Cap screw fastening contact and arcing tips to contact arm (5/16 in.-18, 3/4 in. hex.h. slot. sherardized)
154196	Spring lock washer for No. 17376 (21/64 in. by 37/64 in. by 5/64 in. thick)
112303	Cap screw fastening pigtail shunt and contact arm to operating arm (5/16 in.-18, 1 in. hex.h. slot. sherardized)
154196	Spring lock washer for No. 112303 (21/64 in. by 37/64 in. by 5/64 in. thick)
412036	Washer for No. 112303 (21/64 in. by 7/8 in. by .075 in. brass)
165378	Pressure spring
165379	Spring seat (17/64 in. by 1 1/8 in. by 1/8 in. thick, fiber)
165380	Spring retainer (17/64 in. by 11/16 in. by 3/16 in. thick, fiber)
126912	Screw fastening Nos. 165379, 165380 to operating arm (14-24, 3/4 in. r.h. sherardized)
154194	Spring lock washer for No. 126912 (17/64 in. by 29/64 in. by 5/64 in. thick)
143974	Washer for No. 126912 (17/64 in. by 1/2 in. by .0625 in. sherardized)
165381	Pigtail shunt
17366	Cap screw fastening pigtail shunt to magnet frame (5/16 in.-18, 7/8 in. hex.h. slot. sherardized)
154196	Spring lock washer for No. 17366 (21/64 in. by 37/64 in. by 5/64 in. thick)
412036	Washer for No. 17366 (21/64 in. by 7/8 in. by .075 in. brass)
201316	BLOWOUT COIL SUPPORT with contact tip and dowel pins
1467860	Contact tip for blowout coil
17376	Cap screw fastening contact tip to support (5/16 in.-18, 3/4 in. hex.h. slot. sherardized)
154196	Spring lock washer for No. 17376 (21/64 in. by 37/64 in. by 5/64 in. thick)
151848	Cap screw fastening blowout coil support to supporting block (3/8 in.-16, 1 1/2 in. hex.h. slot. sherardized)



PARTS OF TYPE SB-61-11 FORMS E1, E2, E3, E4, E5 AND E6  
LINE BREAKERS

TYPE DB-291 FORM E7 CONTACTOR

Cat.No.	Description
154197	Spring lock washer for No. 151848 (13/32 in. by 25/32 in. by 3/32 in. thick)
141259	Washer for No. 151848 (13/32 in. by 3/4 in. by .0625 in. sherardized)
201317	BLOWOUT COIL with copper connection strip and insulation sleeve
26858	Screw fastening blowout coil to support (14-24, 5/8 in. f.h. brass)
126871	Cap screw fastening blowout coil copper connection strip to supporting block (14-24, 3/4 in. hex.h. slot. sherardized)
154194	Spring lock washer for No. 126871 (17/64 in. by 29/64 in. by 5/64 in. thick)
143974	Washer for No. 126871 (17/64 in. by 1/2 in. by .0625 in. sherardized)
1404938	Insulation shield between blowout coil support and operating coil
201313	Punched copper tube cable terminal for magnet frame or blowout coil connection strip (2 5/8 in. long, 11/32 in. bolt hole)
201314	Punched copper tube cable terminal for magnet frame or blowout coil connection strip (2 1/8 in. long, 11/32 in. bolt hole)
17366	Cap screw fastening Nos. 201313, 201314 to blowout coil connection strip (5/16 in.-18, 7/8 in. hex.h. slot. sherardized)
126869	Nut for No. 17366 (5/16 in.-18, hex. st'd. sherardized)
154196	Spring lock washer for No. 126869 (21/64 in. by 37/64 in. by 5/64 in. thick)
201318	Insulated blowout coil core
201319	Pole piece with feeder block, right-hand
201320	Pole piece with feeder block, left-hand
17380	Screw fastening pole piece to blowout coil core (5/16 in.-18, 5/8 in. f.h. sherardized)
201321	Insulation side plate for blowout coil, right-hand
201322	Insulation side plate for blowout coil, left-hand
176330	Screw fastening side plate to pole piece (10-30, 3/4 in. r.h. brass)
154191	Spring lock washer for No. 176330 (13/64 in. by 25/64 in. by .0625 in.)
201323	Washer for No. 176330 (13/64 in. by 13/32 in. by .030 in. brass)
447899	Stud for insulation side plates (5/16 in.-18, 3 in. brass)
145598	Washer for No. 447899 (21/64 in. by 5/8 in. by .0625 in. sherardized)



PARTS OF TYPE SB-61-11 FORMS E1, E2, E3, E4, E5 AND E6  
LINE BREAKERS

TYPE DB-291 FORM E7 CONTACTOR

Cat.No.	Description
126869	Nut for No. 447899 (5/16 in.-18, hex. st'd, sherardized)
154196	Spring lock washer for No. 126869 (21/64 in. by 37/64 in. by 5/64 in. thick)
201332	Field piece, right-hand, with feeder block
201333	Field piece, left-hand, with feeder block
112303	Cap screw fastening pole piece and field piece feeder blocks together (5/16 in.-18, 1 in. hex.h. slot. sherardized)
154196	Spring lock washer for No. 112303 (21/64 in. by 37/64 in. by 5/64 in. thick)
201334	ARC CHUTE, consists of side plates with upper and lower spacing blocks
201335	Side plate
201336	Spacing block, upper, for arc chute sides
201337	Spacing block, lower, for arc chute sides
176309	Stud for side plates and spacing blocks (14-24, 2 5/8 in. long, sherardized)
201327	Stud for side plates, spacing blocks and arc chute supports (14-24, 3 3/8 in. long, sherardized)
143974	Washer for Nos. 176309, 201327 (17/64 in. by 1/2 in. by .0625 in. sherardized)
150479	Nut for Nos. 176309, 201327 (14-24, hex. st'd. sherardized)
154194	Spring lock washer for No. 150479 (17/64 in. by 29/64 in. by 5/64 in. thick)
201338	Support, right-hand, for arc chute
201339	Support, left-hand, for arc chute
201340	Felt dust guard with tacks, for arc chute
127349	Screw fastening support to field piece (No. 10, 1 in. f.h. sherardized)

TYPE FI-102 FORM A4 INTERLOCK FOR FORMS E4, E5 AND E6  
LINE BREAKERS

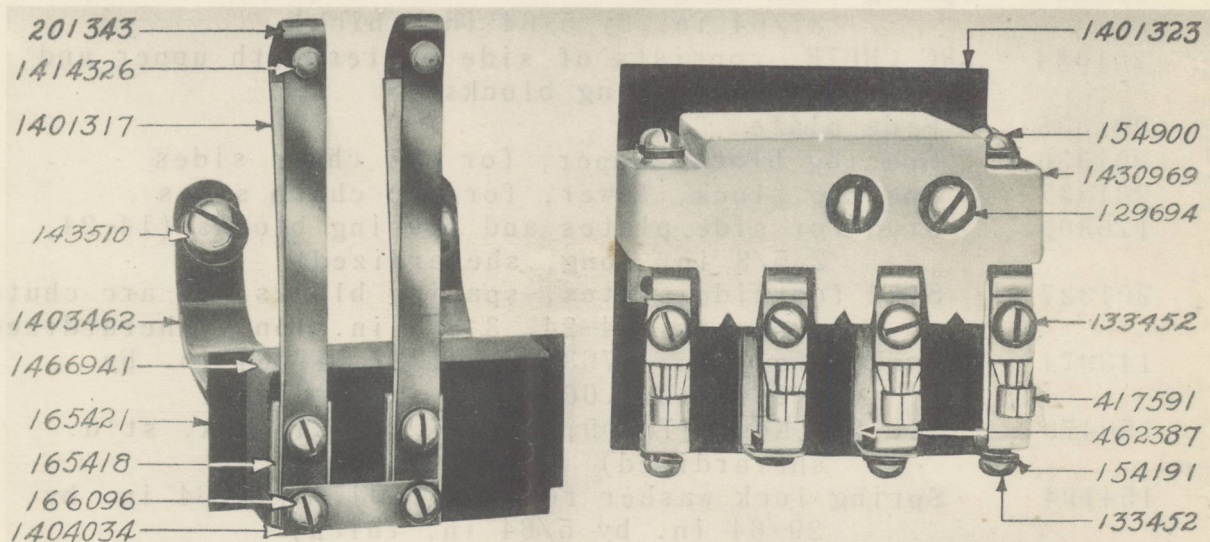
221429	TYPE FI-102, FORM A4 INTERLOCK, complete
	Following are the parts:-
1466941	Finger block
1403462	Support for finger block
143510	Screw fastening finger block support to contactor (5/16 in.-18, 5/8 in. r.h. sherardized)
154196	Spring lock washer for No. 143510 (21/64 in. by 37/64 in. by 5/64 in. thick)
165421	Insulation shield between finger block and support
165418	Finger base



PARTS OF TYPE SB-61-11 FORMS E1, E2, E3, E4, E5 AND E6  
LINE BREAKERS

TYPE FI-102 FORM A4 INTERLOCK FOR FORMS E4, E5 AND E6  
LINE BREAKERS

Cat.No.	Description
128616	Screw fastening finger base to finger block (10-32, 5/8 in. r.h. sherardized)
201343	Contact finger with tip
1414326	Contact tip
1401317	Stop for contact finger
1404034	Connection strip for contact finger
166096	Screw fastening contact finger to base (10-30, 3/8 in. r.h. sherardized)



*Type FI-102 Form A4 Interlock*

155830	Washer for Nos. 128616, 166096 (3/16 in. by 3/8 in. by .034 in. sherardized)
154191	Spring lock washer for Nos. 128616, 166096 (13/64 in. by 25/64 in. by .0625 in.)
1430969	Contact block
1401323	Insulation shield between contact block and contactor
129694	Screw fastening contact block to contactor (14-24, 3 1/2 in. r.h. sherardized)
143974	Washer for No. 129694 (17/64 in. by 1/2 in. by .0625 in. sherardized)
154194	Spring lock washer for No. 129694 (17/64 in. by 29/64 in. by 5/64 in.)
209987	Contact support
462387	Contact plate for contact support



PARTS OF TYPE SB-61-11 FORMS E1, E2, E3, E4, E5 AND E6  
LINE BREAKERS

TYPE FI-102 FORM A4 INTERLOCK FOR FORMS E4, E5 AND E6  
LINE BREAKERS

Cat.No.	Description
154900	Screw fastening contact support to contact block (10-32, 1 1/8 in. r.h. sherardized)
155830	Washer for No. 154900 (3/16 in. by 3/8 in. by .034 in. sherardized)
154191	Spring lock washer for No. 154900 (13/64 in. by 25/64 in. by .0625 in.)
417591	Copper terminal for contact support
133452	Screw fastening contact plate and copper terminal to support (10-32, 1/4 in. r.h. sherardized)
154191	Spring lock washer for No. 133452 (13/64 in. by 25/64 in. by .0625 in.)
1401991	Supporting plate between interlock and contactor
148921	Screw fastening No. 1401991 to contactor (14-24, 1/2 in. f.h. sherardized)

TYPE DB-685 FORMS B1, B2 AND B12 RELAYS

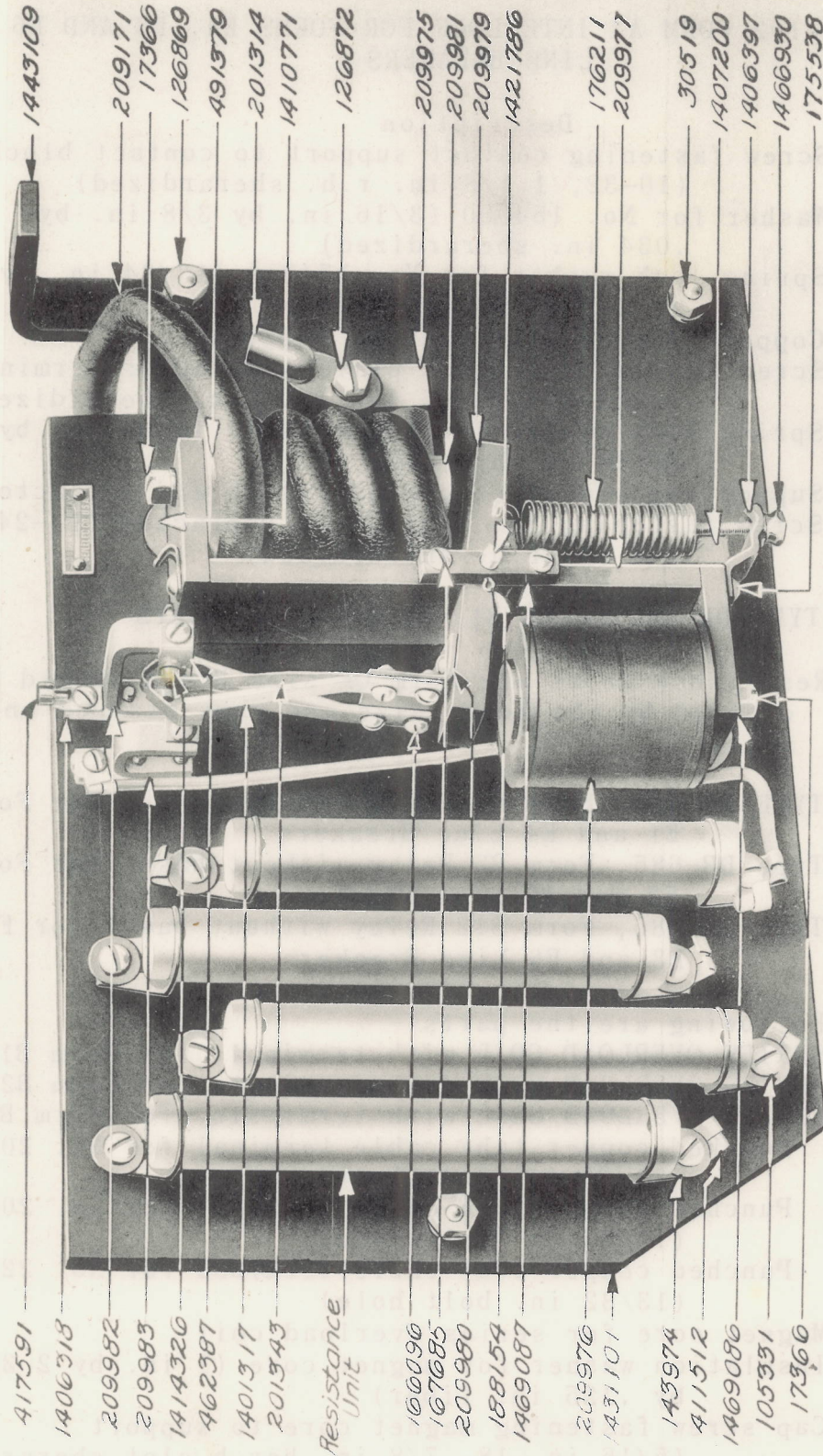
NOTE:-Resistance units are Form QF size B and should be ordered by the Form, size and ohms stamped on unit.

221430	TYPE DB-685, FORM B1 RELAY without base, for Forms E1 and E4 Line Breakers
221431	Type DB-685, Form B2 Relay without base, for Forms E2 and E5 Line Breakers
221432	Type DB-685, Form B12 Relay without base, for Forms E3 and E6 Line Breakers

Following are the parts:-

209171	SERIES OVERLOAD COIL with terminal, for Form B1 Relay
209172	SERIES OVERLOAD COIL with terminal, for Form B2 Relay
221433	SERIES OVERLOAD COIL with terminals, for Form B12 Relay
201314	Punched copper tube cable terminal for No. 209171 (11/32 in. bolt hole)
32538	Punched copper tube cable terminal for No. 209172 (11/32 in. bolt hole)
36031	Punched copper tube cable terminal for No. 221433 (13/32 in. bolt hole)
209981	Magnet core for series overload coil
491379	Insulation washer for magnet core (1 in. by 2 3/4 in. by .125 in. fiber)
17366	Cap screw fastening magnet core to support (5/16 in.-18, 7/8 in. hex.h.slot.sherardized)
154196	Spring lock washer for No. 17366 (21/64 in. by 37/64 in. by 5/64 in. thick)





Type DB-685 Form BI Relay



PARTS OF TYPE SB-61-11 FORMS E1, E2, E3, E4, E5 AND E6  
LINE BREAKERS

TYPE DB-685 FORMS B1, B2 AND B12 RELAYS

Cat.No.	Description
209975	Connection block for series overload coil for Form B1 Relay
1469084	Connection block for series overload coil for Form B2 Relay
1406360	Spacing block between connection block and base
144977	Screw fastening connection block and spacing block to base (14-24, 1 1/4 in. r.h. sherardized)
154194	Spring lock washer for No. 144977 (17/67 in. by 29/64 in. by 5/64 in. thick)
143974	Washer for No. 144977 (17/64 in. by 1/2 in. by .0625 in. sherardized)
201314	Punched copper tube cable terminal for series overload coil connection block for Form B1 Relay, 11/32 in. bolt hole
176934	Punched copper tube cable terminal for series overload coil connection block for Form B2 Relay, 11/32 in. bolt hole
126872	Cap screw fastening terminal to connection block (5/16 in.-18, 5/8 in. hex.h. slot. sherardized)
154196	Spring lock washer for No. 126872 (21/64 in. by 37/64 in. by 5/64 in. thick)
13814	Connection screw for series overload coil for Form B12 Relay (3/8 in.-16, 2 in. hex.h. st'd, brass)
219220	Large washer for No. 13814 (13/32 in. by 1 in. by 1/8 in. thick, sherardized)
141259	Small washer for No. 13814 (13/32 in. by 3/4 in. by .0625 in. sherardized)
13390	Nut for No. 13814 (3/8 in.-16, 1/4 in. thick, hex. st'd, brass)
154197	Spring lock washer for No. 13390 (13/32 in. by 25/32 in. by 3/32 in. thick)
32539	Punched copper tube cable terminal for connection screw (13/32 in. bolt hole)
209976	HOLDING COIL
411512	Large copper terminal for holding coil lead
410567	Small copper terminal for holding coil lead
17366	Cap screw fastening holding coil to support (5/16 in.-18, 7/8 in. hex.h. slot. sherardized)
154196	Spring lock washer for No. 17366 (21/64 in. by 37/64 in. by 5/64 in. thick)
209977	Frame with armature stop plate and supports for coils
1469086	Support for coils
167685	Screw fastening series coil support to frame (10-30, 7/8 in. r.h. sherardized)



PARTS OF TYPE SB-61-11 FORMS E1, E2, E3, E4, E5 AND E6  
LINE BREAKERS

TYPE DB-685 FORMS B1, B2 AND B12 RELAYS

Cat.No.	Description
175538	Screw fastening holding coil support to frame (10-30, 1 in. r.h. sherardized)
154191	Spring lock washer for Nos. 167685, 175538 (13/64 in. by 25/64 in. by .0625 in.)
209978	Armature stop with rivets
144977	Screw fastening coil supports to base (14-24, 1 1/4 in. r.h. sherardized)
143974	Washer for No. 144977 (17/64 in. by 1/2 in. by .0625 in. sherardized)
154194	Spring lock washer for No. 144977 (17/64 in. by 29/64 in. by 5/64 in. thick)
1410771	Spacing washer for coil supports and frame (9/32 in. by 1 1/8 in. by 1/4 in. thick, fiber)
209979	Armature with bearing and supporting bracket, for contact fingers
209980	Supporting bracket for contact finger
203912	Bearing bushing for armature (1/4 in. by 5/16 in. by 1 1/2 in. brass)
1421786	Hinge pin for armature (1/4 in. by 2 1/2 in.)
188154	Spring cotter for hinge pin (5/64 in. by 3/4 in. sherardized)
1469087	Bearing block for armature
167685	Screw fastening bearing block to frame (10-30, 7/8 in. r.h. sherardized)
154191	Spring lock washer for No. 167685 (13/64 in. by 25/64 in. by .0625 in.)
1407200	Calibrating plate
166096	Screw fastening calibrating plate to frame (10-30, 3/8 in. r.h. sherardized)
154191	Spring lock washer for No. 166096 (13/64 in. by 25/64 in. by .0625 in.)
1406397	Calibrating spring support
175538	Screw fastening spring support to frame (10-30, 1 in. r.h. sherardized)
154191	Spring lock washer for No. 175538 (13/64 in. by 25/64 in. by .0625 in.)
176211	Calibrating tension spring
1466930	Calibrating adjusting screw
201343	Contact finger with tip
1414326	Contact tip
1401317	Stop for contact finger
166096	Screw fastening contact finger and stop to support (10-30, 3/8 in. r.h. sherardized)
154191	Spring lock washer for No. 166096 (13/64 in. by 25/64 in. by .0625 in.)



PARTS OF TYPE SB-61-11 FORMS E1, E2, E3, E4, E5 AND E6  
LINE BREAKERS

TYPE DB-685 FORMS B1, B2 AND B12 RELAYS

Cat.No.	Description
209982	Large contact support with contact plate
209983	Small contact support with contact plate
462387	Contact plate
175561	Screw fastening contact plate to support (10-30, 1/2 in. r.h. sherardized)
154191	Spring lock washer for No. 175561 (13/64 in. by 25/64 in. by .0625 in.)
175538	Screw fastening contact support and terminal base to relay base (10-30, 1 in. r.h. sherardized)
150279	Washer for No. 175538 (13/64 in. by 13/32 in. by .044 in. sherardized)
154191	Spring lock washer for No. 175538 (13/64 in. by 25/64 in. by .0625 in.)
1406318	Terminal base
417591	Copper terminal for No. 1406318
166096	Screw fastening terminal to base (10-30, 3/8 in. r.h. sherardized)
154191	Spring lock washer for No. 166096 (13/64 in. by 25/64 in. by .0625 in.)
222243	Base for relay and resistance units, with terminal bases, terminals and wire cleats
1431101	Base for relay and resistance units
1401924	Terminal base for resistance unit
411512	Copper terminal for No. 1401924
127116	Screw fastening terminal base to relay base (14-24, 5/8 in. r.h. sherardized)
105331	Screw fastening copper terminal and resistance unit to terminal base (14-24, 3/8 in. r.h. sherardized)
143974	Washer for Nos. 127116, 105331 (17/64 in. by 1/2 in. by .0625 in. sherardized)
154194	Spring lock washer for Nos. 127116, 105331 (17/64 in. by 29/64 in. by 5/64 in. thick)
1443109	Support for base
1431110	Insulation strip for base support
30519	Cap screw fastening base to support (5/16 in.-18, 1 1/4 in. hex.h. slot. sherardized)
145598	Washer for No. 30519 (21/64 in. by 5/8 in. by .0625 in. sherardized)
126869	Nut for No. 30519 (5/16 in.-18, hex. st'd.sherardized)
154196	Spring lock washer for No. 126869 (21/64 in. by 37/64 in. by 5/64 in. thick)
1419726	Spacer between base and support
463327	Wire cleat for one wire
463328	Wire cleat for two wires
463329	Wire cleat for three wires



PARTS OF TYPE SB-61-11 FORMS E1, E2, E3, E4, E5 AND E6  
LINE BREAKERS

TYPE DB-685 FORMS B1, B2 AND B12 RELAYS

Cat.No.	Description
209985	Screw fastening wire cleats to base (6-32, 7/8 in. r.h. sherardized)
196351	Washer for No. 209985 (5/32 in. by 5/16 in. by .034 in. sherardized)
196352	Nut for No. 209985 (6-32, hex. st'd. sherardized)
139033	Spring lock washer for No. 196352 (5/32 in. by 5/16 in. by .031 in.)
433468	Connection strip for resistance unit

INDEX TO CATALOG NUMBERS

Cat.No.	Page	Cat.No.	Page	Cat.No.	Page	Cat.No.	Page
13390-11		143522-3		165374-3		201320-6	
13814-11		143974-5,6,7,8,		165375-3		201321-6	
16131-2		11,12,13		165376-5		201322-6	
17366-5,6,9,11		144977-11,12		165378-5		201323-6	
17376-3,5		145598-6,13		165379-5		201327-7	
17380-6		145670-3		165380-5		201332-7	
26858-6		146149-2		165381-5		201333-7	
30519-13		148921-9		165383-2		201334-7	
32538-9		149858-1		165418-7		201335-7	
32539-11		150279-13		165421-7		201336-7	
36031-9		150479-7		166096-8,12,13		201337-7	
42574-3		151481-3		167685-11,12		201338-7	
50400-1		151848-5		173003-1		201339-7	
105331-3,13		154191-6,8,9,		174888-2		201340-7	
110774-3		12,13		175538-12,13		201343-8,12	
112303-5,7		154194-3,5,6,7,		175561-13		203912-12	
126869-6,7,13		8,11,		176211-12		205149-1	
126871-6		12,13		176309-7		209171-9	
126872-11		154196-2,5,6,7,		176330-6		209172-9	
126912-5		9,11,13		176934-11		209975-11	
127116-13		154197-1,3,6,11		188154-12		209976-11	
127349-7		154900-9		196351-14		209977-11	
128616-8		155830-8,9		196352-14		209978-12	
129694-8		165359-2		196972-1		209979-12	
133452-9		165363-3		201305-2		209980-12	
139033-14		165364-3		201310-2		209981-9	
141255-1		165365-3		201311-3		209982-13	
141259-1,3,6,11		165367-3		201312-3		209983-13	
141968-1		165368-3		201313-6		209985-14	
141971-1		165369-3		201314-6,9,11		209987-8	
141973-1		165370-3		201316-5		219220-11	
141976-1		165371-3		201317-6		221422-1	
141978-1		165372-3		201318-6		221423-1	
143510-7		165373-3		201319-6		221424-1	



PARTS OF TYPE SB-61-11 FORMS E1, E2, E3, E4, E5 AND E6  
LINE BREAKERS

INDEX TO CATALOG NUMBERS

Cat.No.	Page	Cat.No.	Page	Cat.No.	Page	Cat.No.	Page
221425-1		417591-9, 13		1403462-7		1431101-13	
221426-1		433468-14		1404034 8		1431110-13	
221427-1		447899-6		1404938-6		1443109-13	
221428-2		462387-8, 13		1406318-13		1466930-12	
221429-7		463327-13		1406321-1		1466941-7	
221430-9		463328-13		1406360-11		1467860-5	
221431-9		463329-13		1406397-12		1469084-11	
221432-9		491379-9		1407200-12		1469086-11	
221433-9		1400457-5		1410771-12		1469087-12	
222243-13		1401317-8, 12		1414326-8, 12		1480533-1	
410567-11		1401323-8		1419726-13		1542078-1	
411512-3, 11, 13		1401924-13		1421786-12			
412036-5		1401991-9		1430969-8			



## GENERAL ELECTRIC COMPANY

PRINCIPAL OFFICES: SCHENECTADY, N. Y.

### SALES OFFICES (Address nearest Office)

Atlanta, Ga.	Third National Bank Building
Baltimore, Md.	Lexington Street Building
Birmingham, Ala.	Brown-Marx Building
Boston, Mass.	84 State Street
Buffalo, N. Y.	Electric Building
Butte, Mont.	Electric Building
Charleston, W. Va.	Charleston National Bank Building
Charlotte, N. C.	Commercial National Bank Building
Chattanooga, Tenn.	James Building
Chicago, Ill.	Monadnock Building
Cincinnati, Ohio	Provident Bank Building
Cleveland, Ohio	Illuminating Building
Columbus, Ohio	The Hartman Building
Dayton, Ohio	Dayton Savings and Trust Building
Denver, Colo.	First National Bank Building
Des Moines, Iowa	Hippee Building
Detroit, Mich.	Dime Savings Bank Building
Duluth, Minn.	Fidelity Building
Elmira, N. Y.	Hulett Building
Erie, Pa.	Commerce Building
Fort Wayne, Ind.	1600 Broadway
Hartford, Conn.	Hartford National Bank Building
Indianapolis, Ind.	Traction Terminal Building
Jacksonville, Fla.	Heard National Bank Building
Joplin, Mo.	Miners Bank Building
Kansas City, Mo.	Dwight Building
Knoxville, Tenn.	Burwell Building
Los Angeles, Cal.	Corporation Building, 724 S. Spring Street
Louisville, Ky.	Starks Building
Memphis, Tenn.	Randolph Building
Milwaukee, Wis.	Public Service Building
Minneapolis, Minn.	410 Third Ave., North
Nashville, Tenn.	Stahlman Building
New Haven, Conn.	Second National Bank Building
New Orleans, La.	Maison Blanche Building
New York, N. Y.	Equitable Building, 120 Broadway
Niagara Falls, N. Y.	Gluck Building
Omaha, Neb.	Electric Building
Philadelphia, Pa.	Witherspoon Building
Pittsburgh, Pa.	Oliver Building
Portland, Ore.	Electric Building
Providence, R. I.	Turks Head Building
Richmond, Va.	Virginia Railway & Power Building
Rochester, N. Y.	Granite Building
St. Louis, Mo.	Pierce Building
Salt Lake City, Utah	Newhouse Building
San Francisco, Cal.	Rialto Building
Seattle, Wash.	Colman Building
Spokane, Wash.	Paulsen Building
Springfield, Mass.	Third National Bank Building
Syracuse, N. Y.	Onondaga County Savings Bank Building
Toledo, Ohio	Spitzer Building
Washington, D. C.	Commercial National Bank Building
Worcester, Mass.	State Mutual Building
Youngstown, Ohio	Stambaugh Building

For TEXAS, OKLAHOMA and ARIZONA Business refer to Southwest General Electric Co.  
 Dallas, Tex. Interurban Building  
 El Paso, Tex. 500 San Francisco Street  
 Houston, Tex. Third and Washington Streets  
 Oklahoma City, Okla. 1 West Grande Ave.  
 For HAWAIIAN Business refer to Catton, Neill & Co., Ltd., Honolulu

### Motor and Lamp Agencies in all large cities and towns

#### Partial List of FOREIGN Sales Offices

International General Electric Co., Inc.	Schenectady, N. Y.
International General Electric Co., Inc.	120 Broadway, New York City
General Electric Co. (of N. Y.)	83 Cannon St., London, E. C., England
Australian General Electric Co.	Melbourne and Sydney
Companhia General Electric do Brazil	Rio de Janeiro and Sao Paulo
Cia. General Electric Sudamericana	Buenos Aires and Montevideo
Mexican General Electric Co.	City of Mexico and Guadalupe
South African General Electric Co.	Johannesburg and Cape Town

Representatives and Agents in all countries  
 For all CANADIAN Business refer to Canadian General Electric Co., Ltd., Toronto, Ont.  
 For Business in GREAT BRITAIN refer to British Thomson-Houston Co., Ltd., Rugby, England